

**Riverside Dyer Dinghy Association**  
*2024 Single Handed Championship*  
*April 6 and 7, 2024*  
*Sailing Instructions*

**SCHEDULE:** Saturday, April 6, 2024, and Sunday, April 7, 2024.

**SKIPPER MEETING:** 0915 Sunday Only.

**FIRST GUN:** 1000 Saturday and 1000 Sunday.

**NOTICES TO COMPETITORS:** Supplemental instructions may be announced verbally or in writing prior to any race by the Race Committee or via the Riverside Dyer Dinghy Association (RDDA) user group email system by the Fleet Captains.

***Saturday - Qualifying Series***

**RULES:** All races shall be governed by The Racing Rules of Sailing (RRS), the prescriptions of US Sailing, the RDDA 2023-24 Supplemental Sailing Instructions (except Notices to Competitors, Scoring and Prizes and Qualification), and these Sailing Instructions (SIs).

**SCORING:** A low point scoring system shall be used for the Qualifying Series. There shall be **no discards**; all races in the Qualifying Series count towards qualifying for the Match Racing Series.

***Sunday - Match Racing Series***

**RULES:** All races shall be governed by the current RRS, including rules in Appendix C – MATCH RACING RULES, the prescriptions of US Sailing, the current RDDA Supplemental Sailing Instructions and these SIs. The following Rules of Appendix C are modified as follows:

C3.1 is modified per these SIs,

C4.1 is modified to: At her preparatory signal, each boat shall be outside the line that is at a 90 degree angle to the starting line through the starting mark at her assigned end. The boat assigned to the port end (see page 2) shall display a colored flag from her starboard shroud while racing. The boat assigned to the starboard end of the line shall display a colored flag from her starboard shroud while racing. The colors of the flags shall be announced at the Skippers Meeting on Sunday,

C4.2 is modified to: Within the 60 second period following her preparatory signal, a boat shall cross and clear the starting line, the first time from the course side to the pre-start side,

C6.1(a) is modified to: under a rule of Part 2, except rule 14, by clearly hailing the word “protest” immediately after an incident in which she was involved. If requiring an umpire decision, “umpire” must be hailed,

C6.1(b) is modified to: under any rule not listed in rule C6.1(a) or C6.2 by informing the umpires as soon as possible after the incident,

C6.3 is modified to: A boat intending to request redress because of circumstances that arise before she finishes or retires shall inform the umpires no later than two minutes after finishing or retiring,

C6.4(a) is deleted, and

C6.4(b) is modified to only include “No written protest or request for redress is required.”

## **RACES:**

**Saturday:** As many races will be run on Saturday for the Qualifying Series as practical within a two hour time limit. One race will constitute a qualifying series.

**Sunday:** Match racing will be run according to the RDDA Match Race Elimination Championship Round diagram outlined in Appendix B to these SIs. Each match in round 1, 2 and 3 will be best 2-out-of-3 races with the low numbered seed (1 is low, 16 is high) competitor having the Starboard end of the starting line for races 1 and 3, if required, of each match. Round 4 and 5 matches will be best 2-out-of-3 races, with the starting end determined by a coin toss.

If there is no racing on Saturday, then on Sunday the qualifying series shall consist of fleet racing to qualify a smaller group of 4 to 8 boats for a Match Racing Series also held on Sunday. In this event, the Race Committee PRO will make the determination of how many such fleet races should be held and the size of the Match Racing group. The rules in these SI’s applicable to Saturday’s Fleet Racing Qualifying Series shall apply to Sunday’s fleet racing qualifying races, if any.

Should the Match Racing Series not be completed for any reason, the Single Handed Champion (and associated runner-up positions) will be determined by the outcome of the Saturday Qualifying Series or, if there is no racing on Saturday, by the results of the Sunday fleet racing qualifying series.

If conditions on both Saturday and Sunday prevent the determination of a Single Handed Champion per these SI’s, then there will be no Single Handed Champion this year.

**The instructions below pertain to the Sunday Match Racing Series only.**

### ***Participants***

Participants in the Match Racing Series will consist of the top sixteen (16) finishers from the previous day's fleet racing portion of the event as scored by the Low Point System in Appendix A4 of the RRS with no discard (or, if conditions on Saturday prevent sailing, will consist of the top sailors in the Sunday fleet racing qualifying series per these SI's). The Race Committee reserves the right to take a lower number of competitors into the Match Racing Series of the Single Handed Championship if conditions do not allow for sixteen competitors.

### ***Courses***

The Course will be set at the discretion of the Race Committee and may include course W2 or W4. All Match Race marks must be left to starboard. See Appendix A of these SIs. The Race Committee may set a new course for the next start while the competitors are still racing on the existing course. The marks of the new course will be a different color than the prior course. The color and bearing will be communicated to the competitors using a verbal hail.

### ***Marks of the Course***

Marks of the course will be inflatable balls, the start pin, the finish pin and the associated Race Committee boats.

The start/finish line will be defined by a floating buoy with a flag attached at one end of the line and a floating buoy with a flag on the other end of the line or a staff with a flag on a Race Committee Boat.

### ***Starting Sequence***

The starting sequence below shall be used for all match races. This modifies RRS C3.1. All horns may be created automatically by an Ollie Horn.

<u>Time (m:ss)</u>	<u>Sound</u>	<u>Means</u>
	Repeated horn	Attention
		Announce Round
3:00	Three Long horns	Warning
2:00	Two Long horns	Preparatory
1:00	One Long	End of pre-start entry
	<b><i>Whistle**</i></b>	<b><i>Failure to enter properly</i></b>
:30	Three short horns	
:20	Two short horns	
:10	One short horn	
:05, :04, :03, :02, :01	one short horn each second	
:00	One Long	Start

**\*\* ONLY SIGNALLED IF A BOAT HAS NOT ENTERED THE STARTING AREA BY 1:00. IT SHALL BE THE UMPIRE'S RESPONSIBILITY TO CALL A PENALTY ON THE OFFENDING BOAT.**

Subsequent races will start after a brief announcement of the next boats competing. The Race Committee will endeavor to announce the “on deck” competitors as well.

### ***Umpires and Protests***

On-water umpires will be provided for each match. The decision of the on-water umpires will be final.

### ***Scoring***

The first boat to win 2 races in each match will proceed to the next round or, if the final match, be declared winner.

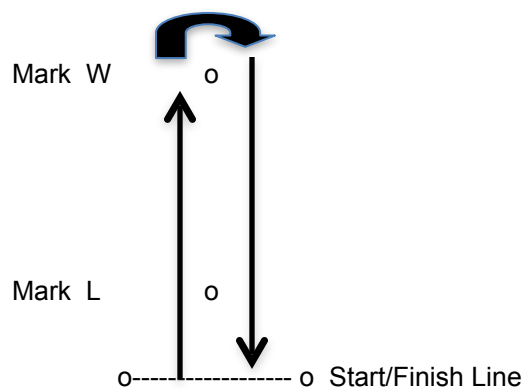
**PARTICIPANTS’ RESPONSIBILITIES:** As a condition precedent to his or her participation in any race or series (including without limitation all activities relating thereto) sponsored or undertaken by the Riverside Yacht Club, Inc. or the Riverside Dyer Dinghy Association, each participant agrees that the safety of the boat and its crew and the decision whether or not to start or continue a race is solely his or her responsibility, and each boat and each participant waives any and all claims, including without limitation any claim in respect of assistance given or not given, against Riverside Yacht Club, Inc. or the Riverside Dyer Dinghy Association, and their respective officers, directors, members, committees, employees, or agents, for any injury or damage resulting from such participation.

**The RDDA strongly recommends that sailors planning to frostbite wear a dry suit while sailing.**

***RDDA Match Race – APPENDIX A***  
***Courses***

**Course 1 – W2**

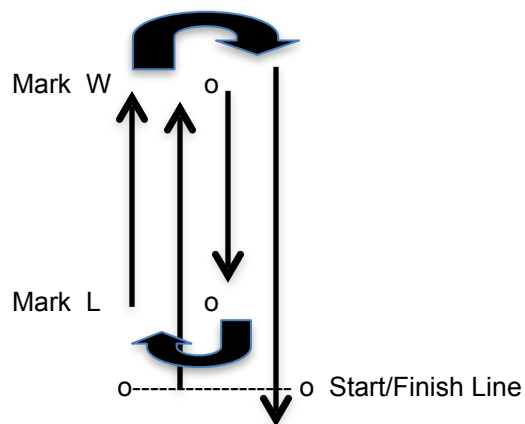
Start – W1 – Finish



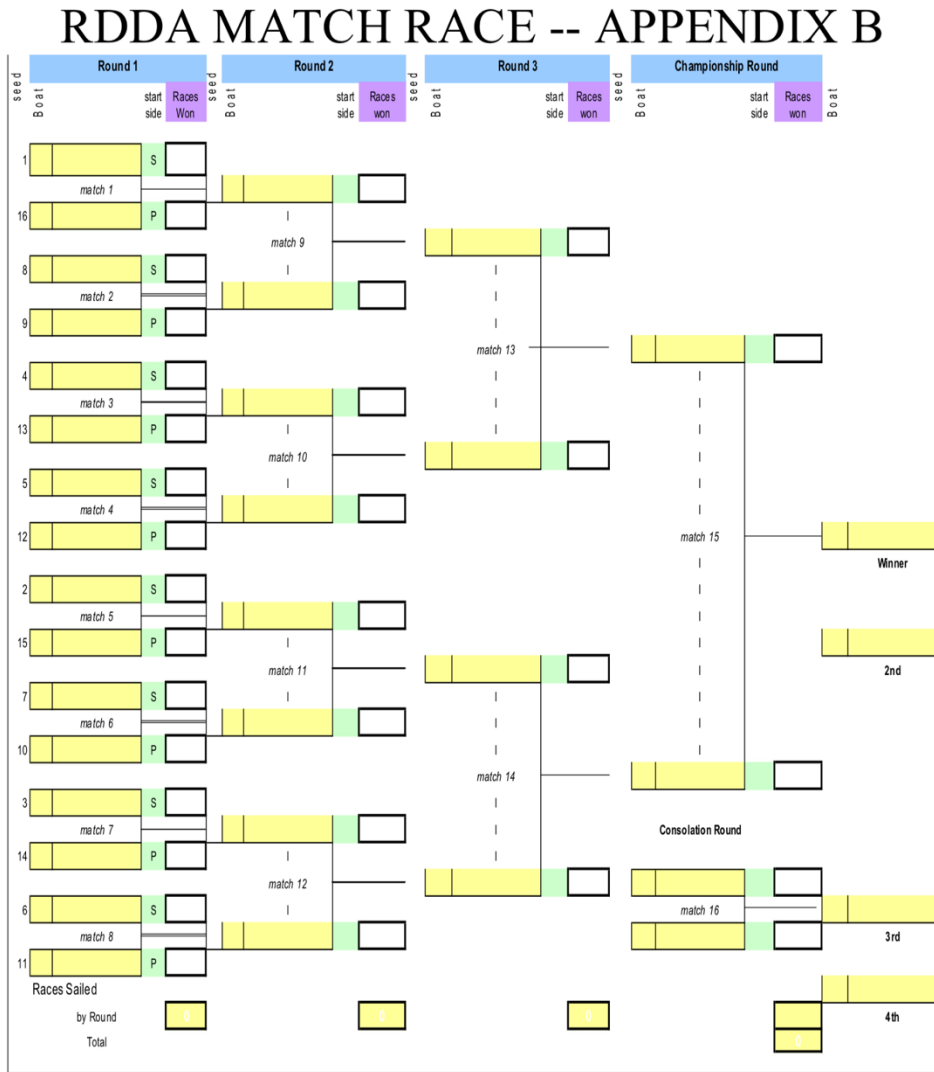
---

**Course 2 – W4**

Start – W1 – L1 – W2 - Finish



***RDDA Match Race – APPENDIX B***  
*Elimination Championship Round (example if bracket of 16)*

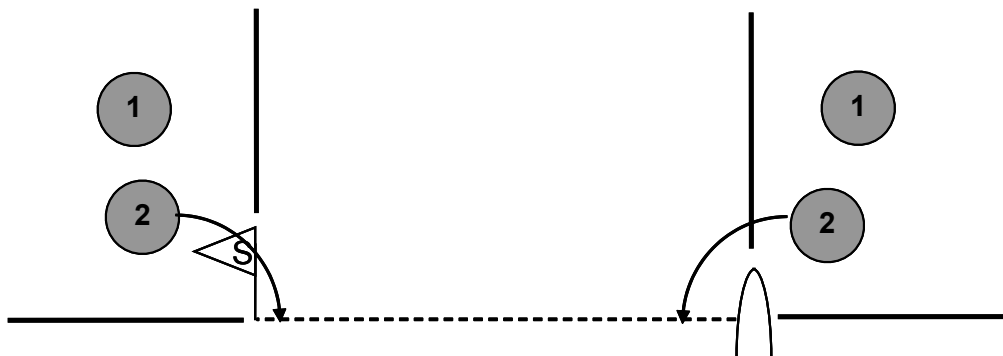




## ***RDDA Match Race Appendix C***

### ***Starting Guidelines***

#### ***“H Format”***



#### ***Time before Start***

1

##### ***Immediately before 2:00***

Boat must be in the box defined by an extension of the start line on her assigned end of the line and a 90 degree extension to the line at either the starting pin or the flag on the RC boat.

2

##### ***Not sooner than 2:00, but not later than 1:00.***

Boat must cross and clear the start line from the course side or incur a penalty under C7 (to be taken after starting)